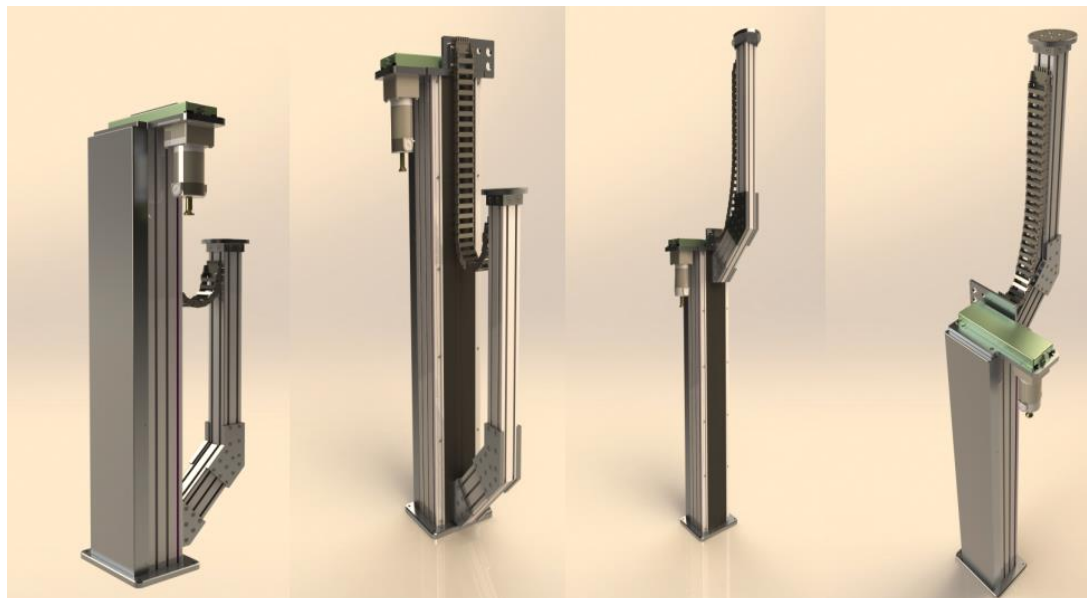




dat con

smart security  
www.dat-con.com

# Electric mast **DAT-CON** **DC-MST-OEM**



## 1. Technical specifications

<b>Max load</b>	Up to 100kg
<b>Retracted height</b>	1800 mm
<b>Traveling length</b>	1500 mm
<b>IP</b>	67
<b>Controller</b>	Ethernet, RS 232/422/485
<b>Operating temperature</b>	-32°C + 75°C
<b>Storage temperature</b>	-40°C + 80°C
<b>EMI/EMC</b>	IEC950
<b>Environment protection</b>	Compliant with MIL-STD-810

## 2. Dimensions

